



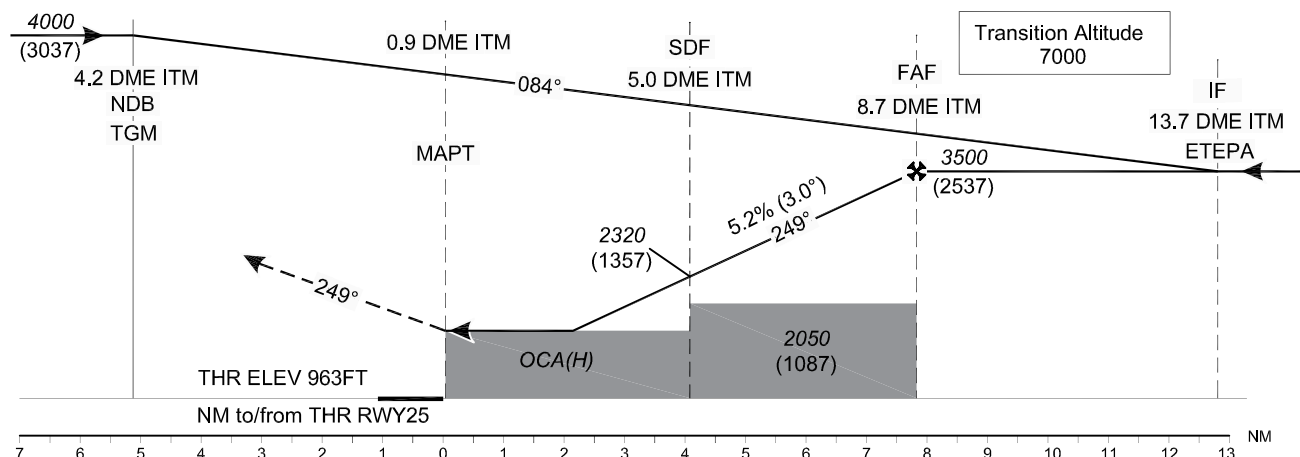
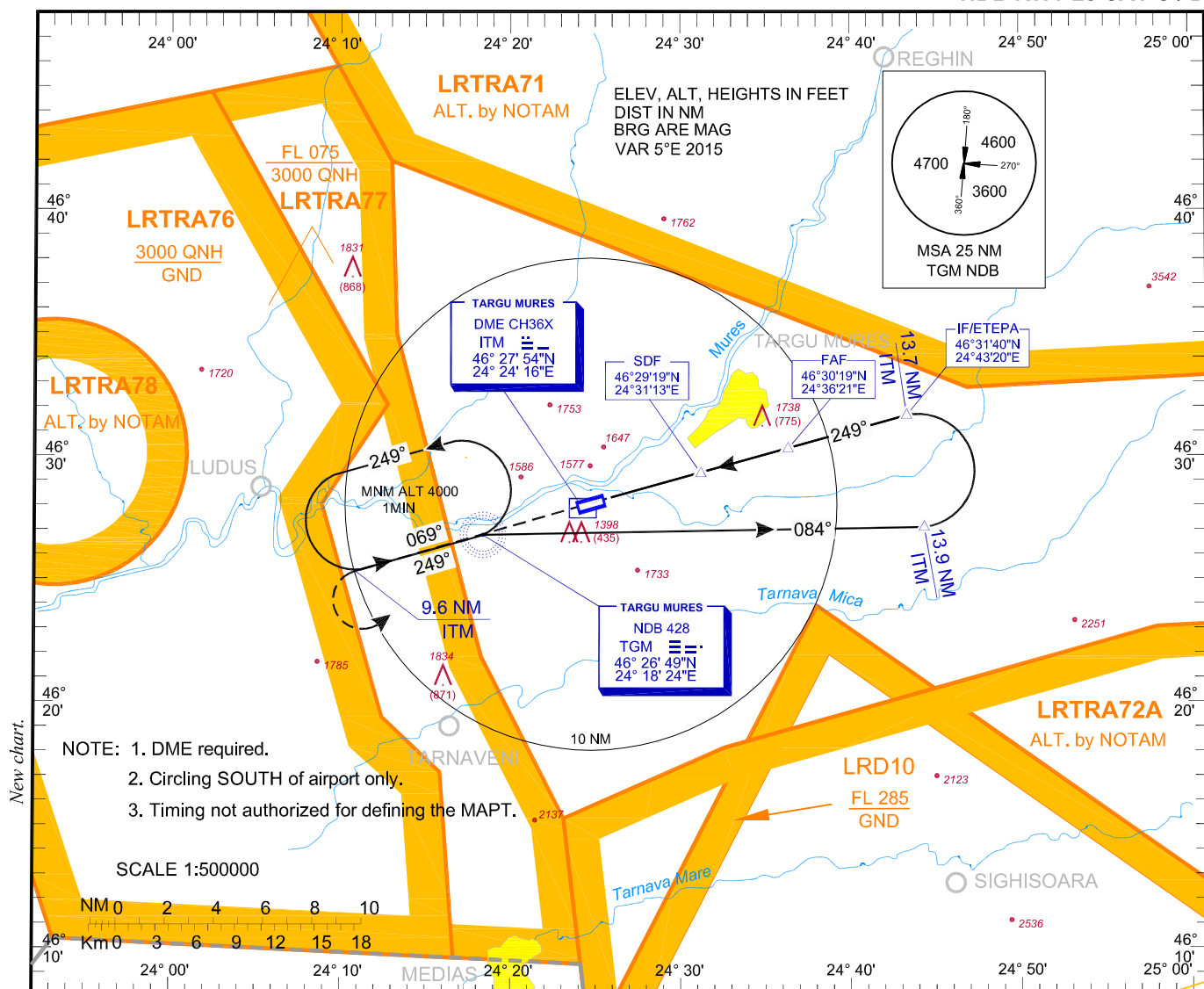
INSTRUMENT APPROACH

CHART - ICAO AERODROME ELEV. 963 ft
HEIGHTS RELATED TO AD ELEVNAPOC APPROACH 126.425
NAPOC NORTH APPROACH 126.425
NAPOC SOUTH APPROACH 119.675
TARGU MURES TOWER 120.325
TARGU MURES ATIS 125.950

TÂRGU MUREȘ/Transilvania

Târgu Mureș (LRTM)

NDB RWY 25 CAT C / D



MISSED APPROACH

Climb straight ahead to TGM NDB (BRG 249);
on BRG 249 from TGM NDB to D 9.6 ITM;
LT, direct to TGM NDB climbing to 4000 and hold.
Turn limited to max 250 KIAS.

OCA/H	C	D
Straight-in approach	1730 (767)	
Circling	2200	2300

GS	KTS	100	120	140	160
FAF-MAPT (7.8 NM)	MIN:S	4:41	3:54	3:20	2:55
Rate of descent (5.24%)	FT/MIN	531	637	743	849

Distance to DME ITM	NM	2	3	4	5	6	7	8
Distance to THR 25	NM	1.1	2.1	3.1	4.1	5.1	6.1	7.1
Altitude (Height)	FT	1365 (402)	1684 (721)	2002 (1039)	2320 (1357)	2639 (1676)	2957 (1994)	3276 (2313)

For data tabulation see verso

**TÂRGU MUREȘ / TRANSILVANIA - TÂRGU MUREȘ (LRTM)**
NDB CAT C, D RWY 25**AERONAUTICAL DATA TABULATION**

NDB Approach CAT C, D to RWY 25	
Fix/Point	Coordinates
TGM NDB (IAF)	46°26'48.9"N 024°18'23.7"E
13.9 D ITM – BRG 083.65° TGM outbound	46°27'07.3"N 024°44'21.1"E
ETEPA / 13.7 D ITM (IF) – BRG 249.22°TGM	46°31'39.9"N 024°43'19.6"E
8.7 D ITM (FAF) – BRG 249.13° TGM	46°30'19.1"N 024°36'21.2"E
5.0 D ITM (SDF) – BRG 249.08° TGM	46°29'19.3"N 024°31'12.9"E
0.9 D ITM (MAPT) - BRG 248.98° TGM	46°28'12.5"N 024°25'29.9"E
THR THR 25	46°28'12.53"N 024°25'29.92"E
9.6 D ITM - BRG 248.91° TGM	46°25'20.2"N 024°10'54.2"E

Final approach descent angle: 3.00°